

DELTA™ IV DeviceNet™

DLT4B - 4 Zone Flow Ratio Controller

Enabling Process Optimization for Critical Deposition and Etch Processes



The DELTA™ IV Flow Ratio Controller is a critical process control instrument in the MKS line of digital control, web-enabled products providing the latest in gas flow ratio measurement and control technology necessary to meet the demands of multi-channel flow distribution.

The DELTA IV mass flow ratio controller divides and controls mixed process gas flows to either multiple chambers or zones within a process chamber at ratios specified by the user to maximize process uniformity and repeatability. The DELTA IV flow ratio controller with its improved performance and more compact design is

the second generation of MKS industry leading DELTA controllers enabling process gas flow ratio control.

Widely used in a variety of flow splitting applications such as etch, strip, and CVD, the DELTA IV provides the user with the ability to distribute gas or gas mixtures to two different zones in a process chamber. Send the DELTA IV a gas – or any mixture – and a ratio set point and the DELTA IV will split the gas into four separate output channels automatically and precisely.

Product Features

- Host control tuning without the need for manual intervention to change or adjust components and the additional capability to adjust flow between process steps
- Control flow proportion independent of the process gas mix based on N₂ equivalent flow of the gas
- Increases tool uptime through reduction of "No Problem Found" product replacements
 - Included embedded diagnostics and software allowing users to check functionality without removing the controller
 - E-diagnostics through embedded Ethernet interface allows monitoring performance parameters during operation

Protected under one or more of the following U.S. patents: No. 6,418,954, No. 6,766,260, No. 7,007,007, No. 7,621,290, No. 7,673,645, US07673645B2
International Patents and Patents pending.



Key Benefits

- Accurately and repeatably control flow ratio providing for better process optimization
- Digital control loop provides rapid response to channel set point independent of the gas mix
- Uses standard web browser – no special software required

Maintaining or improving critical etch and CVD process uniformity continues to be a critical need of the semiconductor process industry as line-widths continue to shrink. The ability to control process uniformity over increasing panel size for both the solar and flat panel industries is also critical. The DELTA IV, four channel ratio controller provides a needed "knob" to tune process gas flows over the substrate surface or gas dispersion head to help achieve these uniformities. The DELTA IV ratio controller provides closed loop control over the flow proportion that is not available with typical metering valve or flow orifice setups that have often been used. The DELTA ratio controllers provide the added advantage of tuning the process from the tool controller as opposed to manual valve adjustment necessary with metering valve and manual changeout which is impractical with fixed flow orifices.

The DELTA IV has a wide dynamic ratio control range and fast development of chamber flow while being adaptive to different tool and process conditions. MKS has developed a unique patent pending ratio control logic enabling rapid ratio and flow response times. This control logic enables the total input flow to be split with channel flows ranging from 2 to 100% of the channel Full Scale for measurement and control purposes. The total of all channel flows shall be split in such a way that their sum equals 100%. For example the flows may be split to 10, 20, 30 and 40% of total flow input going to channels Q1, Q2, Q3 and Q4, respectively. The dynamic control also allows for individual channels to be given 0% set points which closes the valve, effectively closing off flow to this output. All this in a more compact package with the additional features of web enabled setup and diagnostics.

The DELTA's diagnostic feature allows the user to check the DELTA's performance in-situ, lowering costs through reduced removal of No Problem Found devices. This feature is enabled through a web browser utility accessed through the device's Ethernet port. This utility uses a standard web browser and requires no special software. The diagnostic input includes the ability to control the device locally, operate the device, open and close valves along with collecting and saving data for later analysis.

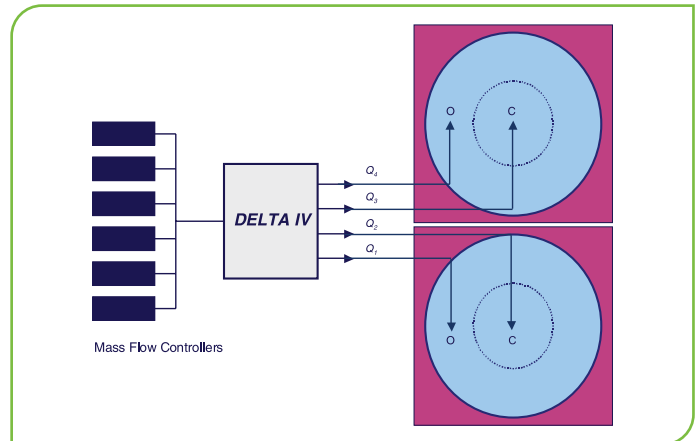


Figure 1 — The DELTA IV flow ratio controller is shown here with its four flow outputs providing flow to center (C) and outer (O) zones within a process chamber for a dual wafer chamber or a dual chamber configuration.

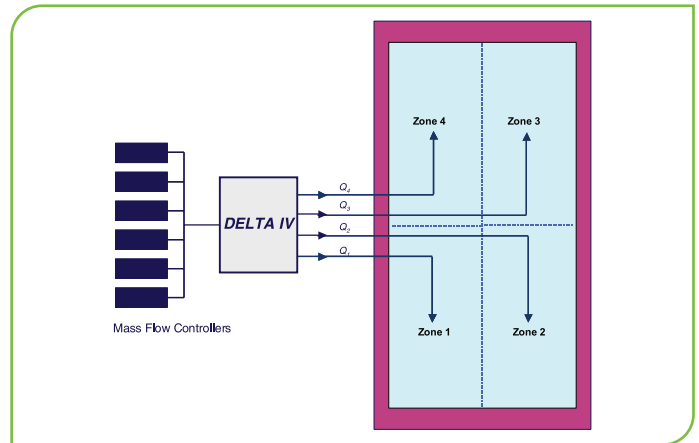


Figure 2 — The DELTA IV flow ratio controller is shown here with its four flow outputs being used to distribute gas flow over four zones within a flat or solar panel process chamber.

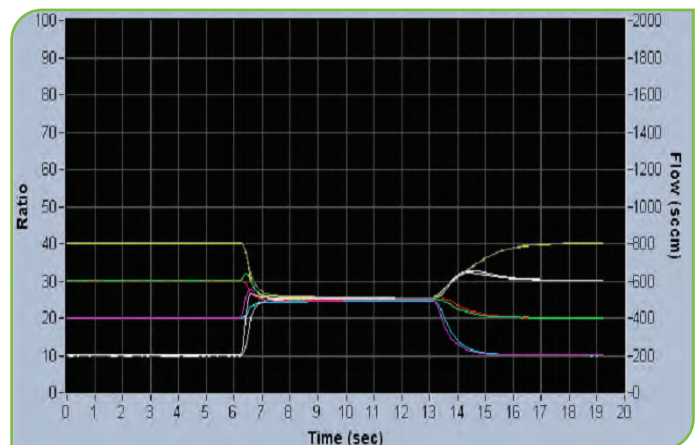


Figure 3 — The DELTA IV ratio controller provides control for four channels of flow. Above the device starts with flows of 20, 30, 10 and 40% in channels, Q1, Q2, Q3 and Q4 respectively. The flow then transitions to 25% in each channel followed by a transition to 10, 20, 30 and 40% in each channel.

Performance

Full Scale Ranges (each channel) (nitrogen equivalent – Q)	500, 1000, 2000, 3000, 5000 and 10000 sccm
Percentage Accuracy (includes non-linearity, hysteresis, and non-repeatability)	±2% set point (for flow ≥10% of channel Full Scale)
Input Ratio Range	0, 2 to 100% of total flow within flow channel control range
Channel Flow Control Range	0, 5 to 100% Full Scale
Percentage Repeatability	±0.3% of set point
Resolution	0.02% of channel Full Scale
Maximum Operating Outlet Pressure	200 Torr at maximum flow rate through all channels
Maximum Allowable Outlet Pressure Differential (highest to lowest pressure channel)	50 Torr with the same percentage flow through all channels
Normal Operating Pressure Differential	<150 Torr (@ 4K split 25%); Except <450 Torr for 10K/10K
Percentage Settling Time	<3 seconds (typical dependent on downstream conductance matching)
Maximum Inlet Pressure	150 psig (non-operational)
Temperature Coefficients	Zero Span <ul style="list-style-type: none"> • <0.05% Full Scale/°C (500 ppm) • <0.08% of Reading/°C (800 ppm)
Warm-up Time	60 minutes
Normal Operating Temperature	10 to 60°C
Storage Temperature	-20 to 65°C
Storage Humidity	0 to 95% relative humidity, non-condensing
Temperature Accuracy	+2°C
Temperature Resolution	0.1°C
Compliance	CE (an overall metal braided, shielded cable, properly grounded at both ends, is required during use).

Mechanical

Fittings (compatible with)	Inlet Outlet <ul style="list-style-type: none"> • Swagelok® 4 VCR® • Male (non-rotatable) • Male (non-rotatable)
Leak Integrity	External (scc/sec He) Through Closed Valve <ul style="list-style-type: none"> • <1x10⁻¹⁰ • <2% of channel Full Scale at 500 Torr differential to <10 Torr
Wetted Materials	316 S.S. VAR (equivalent to 316 S.S. SCQ for semiconductor quality) 316 S.S., Inconel®, KM-45, PTFE
Surface Finish	5 microinch average Ra

Electrical

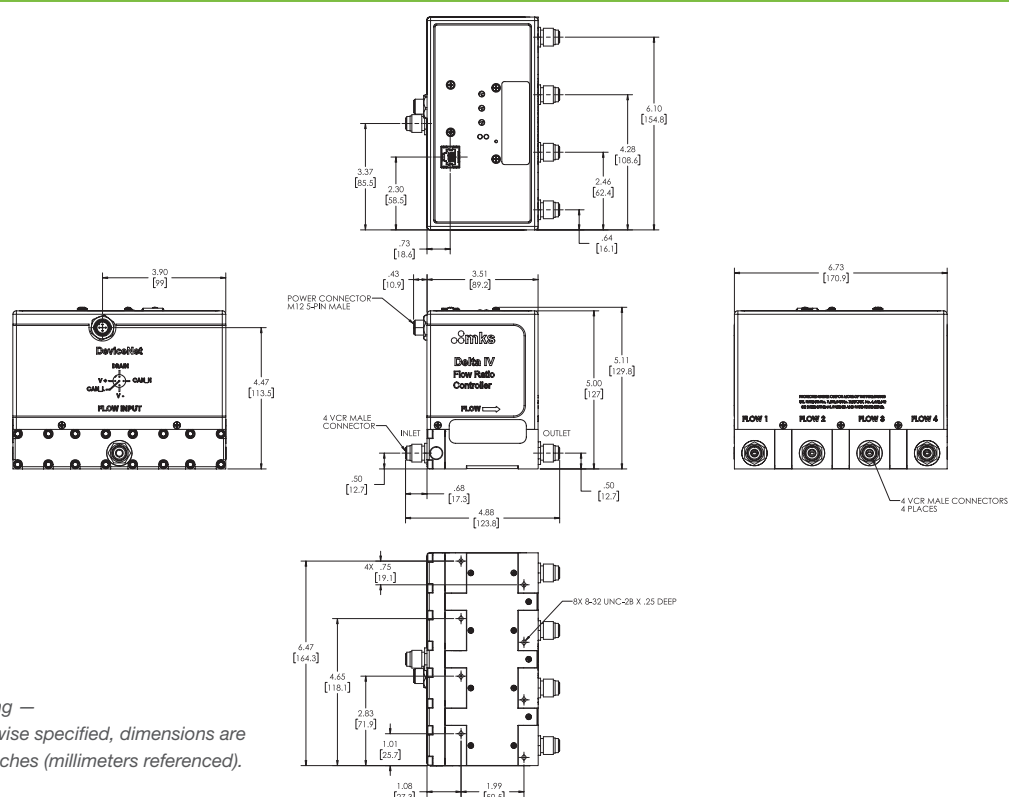
Digital I/O

Connector	5 pin microconnector (DeviceNet™)
Input Voltage	11-25 VDC
Power Consumption	<20 Watts
Set Point and Output Signal	Digital

The DELTA IV Flow Ratio Controller shall not be used with any gas mixture which will react with each other as gas reactions are likely to affect the device flow measurements and may damage the device. The DELTA IV Flow Ratio Controller uses thermal sensors which add heat energy to the gas (and gas mixture) which may cause the gas to decompose and a mixture to react. Please consult MKS Applications Engineering if this is a concern for the intended application of the device. For channels with "0%" set points, a downstream shut-off valve is required to assure no flow through the channel.

Ordering Code Example: DLT4B0BBBB6R20

Ordering Code Example: DLT4B0BBBB6R20	Code	Configuration
Model		
DELTA IV 4-channel Flow Ratio Controller	DLT4B0	DLT4B0
Channel Full Scale Flow Ranges (YYYY)	4 channel	
500 sccm 1000 sccm 2000 sccm 3000 sccm 5000 sccm 10000 sccm All channels must be the same and are N ₂ equivalent.	AAAA BBBB CCCC DDDD EEEE FFFF	BBBB
Interface Electronics (Z)		
DeviceNet	6	6
Fittings (A)		
4 VCR male, non-rotatable on inlet and outlet	R	R
Firmware (BB)		
Firmware Revision	20	20



Dimensional Drawing —

Note: Unless otherwise specified, dimensions are nominal values in inches (millimeters referenced).